



弘立ISF

# SERVICE ACTION

# M

# turn intention into ACTION

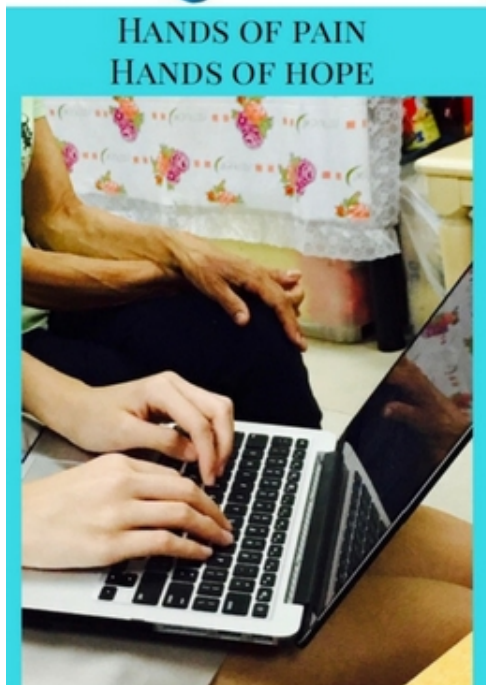
# Y

# P



## ISF GLOCAL GUARDIANSHIP

MY POSITIVE ACTIONS ARE SMALL & DOABLE STEPS I TAKE TOWARDS RESOLVING THE WORLD'S BIG & 'WICKED' PROBLEMS



For more information,  
please contact:

**Elizabeth Solomon**

MYP SERVICE COORDINATOR

STUDENT SERVICE - ISF GLOCAL GUARDIANSHIP IN ACTION

**STEPS TO SERVE WITH SUCCESS**

- 1 PLAN & PREPARE
- 2 SUPPORT & PROMOTE
- 3 SUCCEED & SERVE
4. REPEAT!

**6000 HKD**  
BASED FOR ROOM TO READ (HONG KONG CHAPTER)

**NEPAL FUNDRAISER**

A CASUAL DAY WHERE YOU MAKE A DIFFERENCE!

**WHAT:** Nepal-themed Casual Day  
Dress Code: Flowers, Mountain & Red, Blue, White!  
**Donate at least \$20**

**WHY:** 2015 Earthquake  
Since the April 2015 earthquake, the children of 'House with Heart' have been regrouping and rebuilding their home to the best of their ability. They would greatly appreciate your donations by showing your support by dressing up on casual day and donating as much as you can! Mountains and flowers were chosen as a theme as this is what the children have sent us in their thank-you cards- symbols of gratitude, hope and strength. The cards that started it all>>>>>>

**WHEN:** Wed, April 12th

NOTE: PLEASE WEAR TIE-NECKS, NO HIGH HEELS OR FLIPPY FLIP FLOPPY!